

HOLE SAWS & CORE DRILLS



**Professional
Cutting Tools**

Spindle speeds for HSS annular cutters

Material	Steel < 700 N/mm ²	Steel > 700 N/mm ²	Alloyed steel (stainless) < 1.000 N/mm ²	Cast iron < 250 HB	Cast iron > 250 HB	CuZn-alloys (brittle)	CuZn-alloys (soft)	Aluminium alloys < 11% Si	Plastics	Duroplast (Fibre reinforced plastic)
Vc [m/min]	30	25	20	15	10	60	35	30	20	15
Diameter	RPM	RPM	RPM	RPM	RPM	RPM	RPM	RPM	RPM	RPM
ø12	796	663	531	398	265	1592	928	796	531	398
ø13	735	612	490	367	245	1469	857	735	490	367
ø14	682	568	455	341	227	1364	796	682	455	341
ø15	637	531	424	318	212	1273	743	637	424	318
ø16	597	497	398	298	199	1194	696	597	398	298
ø17	562	468	374	281	187	1123	655	562	374	281
ø18	531	442	354	265	177	1061	619	531	354	265
ø19	503	419	335	251	168	1005	586	503	335	251
ø20	477	398	318	239	159	955	557	477	318	239
ø21	455	379	303	227	152	909	531	455	303	227
ø22	434	362	289	217	145	868	506	434	289	217
ø23	415	346	277	208	138	830	484	415	277	208
ø24	398	332	265	199	133	796	464	398	265	199
ø25	382	318	255	191	127	764	446	382	255	191
ø26	367	306	245	184	122	735	428	367	245	184
ø27	354	295	236	177	118	707	413	354	236	177
ø28	341	284	227	171	114	682	398	341	227	171
ø29	329	274	220	165	110	659	384	329	220	165
ø30	318	265	212	159	106	637	371	318	212	159
ø31	308	257	205	154	103	616	359	308	205	154
ø32	298	249	199	149	99	597	348	298	199	149
ø33	289	241	193	145	96	579	338	289	193	145
ø34	281	234	187	140	94	562	328	281	187	140
ø35	273	227	182	136	91	546	318	273	182	136
ø36	265	221	177	133	88	531	309	265	177	133
ø37	258	215	172	129	86	516	301	258	172	129
ø38	251	209	168	126	84	503	293	251	168	126
ø39	245	204	163	122	82	490	286	245	163	122
ø40	239	199	159	119	80	477	279	239	159	119
ø42	227	189	152	114	76	455	265	227	152	114
ø44	217	181	145	109	72	434	253	217	145	109
ø46	208	173	138	104	69	415	242	208	138	104
ø48	199	166	133	99	66	398	232	199	133	99
ø50	191	159	127	95	64	382	223	191	127	95
ø52	184	153	122	92	61	367	214	184	122	92
ø54	177	147	118	88	59	354	206	177	118	88
ø56	171	142	114	85	57	341	199	171	114	85
ø58	165	137	110	82	55	329	192	165	110	82
ø60	159	133	106	80	53	318	186	159	106	80

HOLE SAW TOOTHING



Variable pitch.
Number of teeth per inch, ie. 8 to 12 teeth per inch.



Variable pitch.
Distance between 2 teeth in mm, ie. varying from 2 to 3 mm.

MATERIALS



Bi-metal (steel basis + HSS working part) for more tool life.



Bi-metal (steel basis + HSS-Co working part) for even more tool life.



Tungsten Carbide Tipped teeth to increase hardness, cutting speed and tool life.

GEOMETRIES



For 90° countersinking applications.

SHANKS & DRIVES



Universal shank 19mm (3/4") with WELDON and NITTO clamping system.



Shank 19mm (3/4") with WELDON clamping system.



Cylindrical shank with 3 flats for improved clamping in drill chucks.

BiMCo Hole saws, regular pitch (4/6)



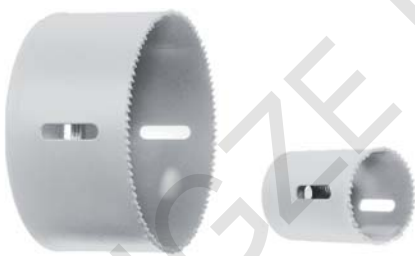
Execution: BIMCO [Bi-metal with 8%Co alloy], teeth milled, side set. Excellent cutting results in [alloyed] steel and stainless steel due to 8% cobalt alloy base material. Robust design with extra firm lid for more stability.

Application: For sawing holes in most commonly used metals, plastics and woods.

Diameter [mm]	Diameter [inch]	Depth [mm]
14,0	9/16"	38
16,0	5/8"	38
17,0	11/16"	38
19,0	3/4"	38
20,0	-	38
21,0	13/16"	38
22,0	7/8"	38
23,0	19/21"	38
24,0	15/16"	38
25,0	1"	38
27,0	1-1/16"	38
29,0	1-1/8"	38
30,0	1-3/16"	38
32,0	1-1/4"	38
33,0	1-5/16"	38
35,0	1-3/8"	38
37,0	1-7/16"	38
38,0	1-1/2"	38
40,0	1-9/16"	38
41,0	1-5/8"	38
43,0	1-11/16"	38
44,0	1-3/4"	38
46,0	1-13/16"	38
48,0	1-7/8"	38
51,0	2"	38
52,0	2-1/16"	38
54,0	2-1/8"	38
57,0	2-1/4"	38
58,0	-	38
59,0	2-5/16"	38
60,0	2-3/8"	38

Diameter [mm]	Diameter [inch]	Depth [mm]
64,0	2-1/2"	38
65,0	2-9/16"	38
67,0	2-5/8"	38
68,0	-	38
70,0	2-3/4"	38
73,0	2-7/8"	38
76,0	3"	38
79,0	3-1/8"	38
83,0	3-1/4"	38
86,0	3-3/8"	38
89,0	3-1/2"	38
92,0	3-5/8"	38
95,0	3-3/4"	38
98,0	3-7/8"	38
102,0	4"	38
105,0	4-1/8"	38
108,0	4-1/4"	38
111,0	4-3/8"	38
114,0	4-1/2"	38
121,0	4-3/4"	38
127,0	5"	38
133,0	5-1/4"	38
140,0	5-1/2"	38
146,0	5-3/4"	38
152,0	6"	38
160,0	6-1/3"	38
168,0	6-5/8"	38
177,0	7"	38
200,0	7-14/16"	38
210,0	8-1/4"	38

BiMCo Hole saws, fine pitch (8/12)



Execution: BIMCO [Bi-metal with 8%Co alloy], teeth milled, side set, fine variable pitch (8/12 TPI). Fine pitched hole saws are preferred on thinner material. Robust design with extra firm lid for more stability.

Application: For sawing holes in most commonly used metals, plastics and woods.
For thin sheet metals (<2mm) (stainless steel <1mm).

Diameter [mm]	Diameter [inch]	Depth [mm]
14,0	9/16"	38
16,0	5/8"	38
17,0	11/16"	38
19,0	3/4"	38
20,0	25/32"	38
21,0	13/16"	38
22,0	7/8"	38
23,0	19/21"	38
24,0	15/16"	38
25,0	1"	38
27,0	1-1/16"	38
29,0	1-1/8"	38
30,0	1-3/16"	38
32,0	1-1/4"	38
35,0	1-3/8"	38
38,0	1-1/2"	38
40,0	1-9/16"	38
41,0	1-5/8"	38

Diameter [mm]	Diameter [inch]	Depth [mm]
43,0	1-11/16"	38
44,0	1-3/4"	38
46,0	1-13/16"	38
48,0	1-7/8"	38
51,0	2"	38
54,0	2-1/8"	38
57,0	2-1/4"	38
60,0	2-3/8"	38
64,0	2-1/2"	38
65,0	2-9/16"	38
68,0	-	38
70,0	2-3/4"	38
73,0	2-7/8"	38
76,0	3"	38
83,0	3-1/4"	38
86,0	3-3/8"	38
92,0	3-5/8"	38
98,0	3-7/8"	38

Diameter [mm]	Diameter [inch]	Depth [mm]
105,0	4-1/8"	38
108,0	4-1/4"	38

Diameter [mm]	Diameter [inch]	Depth [mm]
114,0	4-1/2"	38
127,0	5"	38

Quick-Lock Adapters



1



2



3



4



Nr.	Description	Drive	Range
1	Quick Adapter	HEX 9	14-30 mm
2	Quick Adapter	HEX 9	32-210 mm
3	Quick Adapter	SDS-plus	14-30 mm
4	Quick Adapter	SDS-plus	32-210 mm



1



2



3



Execution: Pilot drill bits for Quick-Lock Adapter.
Application: Piloting hole sawing applications with BiMCo hole saws

Nr.	Description	Length
1	HSS Pilot drill bit	90mm
2	HSS Pilot drill bit	110mm
3	TCT Pilot drill bit	110mm

Description	Shank	Length
Extension	HEX 9	300 mm

BiMCo hole saw sets (4/6) with Quick-Lock



Description	Type	Content
10 piece set HSS-Bi-Co8 hole saws "Plumber"	"10"	1x ø19, 22, 27, 32, 35, 40, 51 and 64mm 1x Quick-Lock adapter 14-30mm (HEX 9) 1x Quick-Lock adapter 32-210mm (HEX 9)
10 piece set HSS-Bi-Co8 hole saws "Electrician"	"10"	1x ø22, 27, 32, 35, 38, 44, 51, 68 and 76mm 1x Quick-Lock adapter 14-30mm (HEX 9) 1x Quick-Lock adapter 32-210mm (HEX 9)
14 piece set HSS-Bi-Co8 hole saws "Allround"	"14"	1x ø19, 22, 25, 32, 35, 38, 44, 51, 57, 64, 68 and 76mm 1x Quick-Lock adapter 14-30mm (HEX 9) 1x Quick-Lock adapter 32-210mm (HEX 9)

TCT Multi-Purpose hole saws



Execution: Stable built hole saw with carbide tipped teeth, cuts up to 5 times faster than traditional hole saws. Maximum cutting depth up to 57mm.

Application: For effortless hole making applications in all kinds of softwood, hardwood, particle boards, MDF, (fibre reinforced) plastics like PVC, nylon and epoxy, aerated concrete, bricks, soft stones and tiles (max. core hardness of 6).

Diameter [mm]	Diameter [inch]	Depth [mm]
14,0	9/16	57
16,0	5/8	57
17,0	11/16	57
19,0	3/4	57
20,0	25/32	57
21,0	13/16	57
22,0	7/8	57
24,0	15/16	57
25,0	1	57
27,0	1.1/16	57
28,0	1-1/8	57
29,0	1-1/8	57
30,0	1-3/16	57
32,0	1-1/4	57
33,0	1-5/16	57
35,0	1-3/8	57
37,0	1-7/16	57
38,0	1-1/2	57
40,0	1-9/16	57
41,0	1-5/8	57
43,0	1-11/16	57
44,0	1-3/4	57
46,0	1-13/16	57
48,0	1-7/8	57
51,0	2	57
52,0	2-1/16	57
54,0	2-1/8	57
57,0	2-1/4	57
59,0	2-5/16	57
60,0	2-3/8	57
64,0	2-1/2	57

Diameter [mm]	Diameter [inch]	Depth [mm]
65,0	2-9/16	57
67,0	2-5/8	57
68,0	2-11/16	57
70,0	2-3/4	57
73,0	2-7/8	57
76,0	3	57
79,0	3-1/8	57
80,0		57
82,0		57
83,0	3-1/4	57
86,0	3-3/8	57
89,0	3-1/2	57
92,0	3-5/8	57
95,0	3-3/4	57
98,0	3-1/2	57
102,0	4	57
105,0	4-1/8	57
108,0	4-1/4	57
111,0	4-3/8	57
114,0	4-1/2	57
121,0	4-3/4	57
125,0		57
127,0	5	57
133,0	5-1/4	57
140,0	5-1/2	57
152,0	6	57
160,0	6-19/64	57
165,0	6-1/2	57
168,0	6-39/64	57
178,0	7	57
200,0	7-7/8	57

BiMCo Roofers' pipe hole saws, 300mm (4/6)



PATENT PENDING



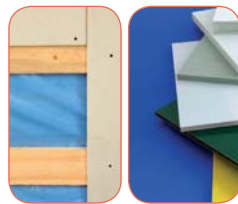
Execution: BIMCO (Bi-metal with 8%Co alloy), roofers' pipe hole saw with variable pitch (4/6 TPI) and 1/2"-14 BSP(G) connection. Supplied with hexagon shank adapter (779.0050) and pilot auger bit (240.2001). Can also be used with HSS twisted drill bit (160.1203) as pilot drill (sold separately).

Application: For sawing fast and precise holes (for exhaust pipes of heating systems or waste air pipes in sanitary systems) in most commonly used materials. Not suited for abrasive materials, stone and concrete.

Diameter [mm]	max. depth [mm]
85	300
110	300
121	300
130	300
140	300
152	300
160	300
170	300
200	300



PATENT PENDING



Execution: BIMCO (Bi-metal with 8%Co alloy), roofers' pipe hole saw with variable pitch (4/6 TPI) and 1/2"-14 BSP(G) connection. Supplied with hexagon shank adapter (779.0050) and pilot auger bit (240.2000).

Application: For sawing fast and precise holes (for exhaust pipes of heating systems or waste air pipes in sanitary systems) in (sloped) roofs. Not suited for abrasive materials, stone and concrete.

Diameter [mm]	max. depth [mm]
85	150
110	150
121	150
130	150
140	150
152	150
160	150
170	150
200	150

TCT Roofers' pipe hole saws, 300mm

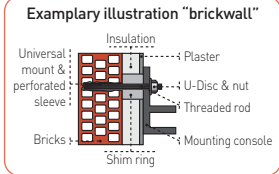
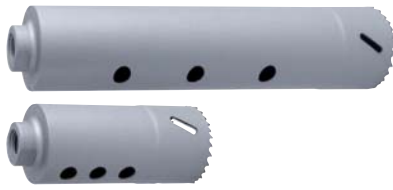


Execution: TCT Construction pipe hole saws were specifically developed for making holes quickly and efficiently in (sloping) roofs made of wood and insulation materials. Drills effortlessly double the number of holes than any other existing models and in less than half the time! Equipped with M16 connection type.

Application: For drilling holes in (sloping) roofs for mounting ventilation and exhaust pipes. Not suited for drilling in metals and abrasive materials such as stone and concrete.

Diameter [mm]	Depth [mm]
80	300
100	300
110	300
130	300
150	300
160	300
170	300
200	300

Special pipe hole saws (4/6)



Execution: BIMCO (Bi-metal wit 8%Co alloy), special hole saw with variable pitch (4/6 TPI) and M16 connection for the facade building industry. Hexagon shank adapter is not included!

Application: For making centre holes for spacer sleeves in insulation material for a technical correct installation of facades on buildings (refer to drawing).

Diameter [mm]	max. depth [mm]
51	100
51	250

PATENT PENDING

Roller shutter hole saws, wood (4/6)



Execution: BIMCO (Bi-metal wit 8%Co alloy), roller shutter hole saw with variable pitch (4/6 TPI) and M16 connection. Supplied with hexagon shank adapter and pilot drill bit. Coated with PTFE to reduce friction and to protect from rusting.

Application: For making holes in wooden window frames in order to feed through the belt of roller shutters.

Diameter [mm]	max. depth [mm]
17,0	90
25,0	90

PATENT PENDING

Roller shutter hole saws, plastic (8/12)



Execution: BIMCO (Bi-metal wit 8%Co alloy), roller shutter hole saw with variable pitch (8/12 TPI) and M16 connection. Supplied with hexagon shank adapter and pilot drill bit. Coated with PTFE to reduce friction and to protect from rusting.

Application: For making holes in plastic window frames in order to feed through the belt of roller shutters.

Diameter [mm]	max. depth [mm]
17,0	90
19,0	90
22,0	90

PATENT PENDING

Adapters



From	To
HEX 12.7	M16 (ext.)
HEX 12.7	1/2" - 14 BSP (int.)

Adjustable hole saws



Execution: Adjustable hole saw, complete in a case

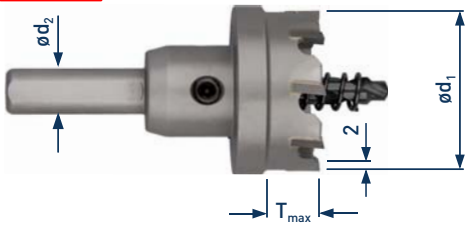
Application: For sawing holes in wood, plastics, gypsum and aluminium. Ideal for installing spotlights.

Diameter range	max. depth
ø30 - 163 mm	23 mm
ø30 - 260 mm	23 mm
ø37 - 300 mm	23 mm

Execution: Spare blades for adjustable hole saws.

Description
HSS blade for wood
Tungsten carbide blade for aluminium

TCT Hole saws 11mm



ød ₁ [mm]	T _{max} [mm]	ød ₂ [mm]
14,0	11	10
16,0	11	10
18,0	11	10
20,0	11	10
22,0	11	10
25,0	11	10
30,0	11	10

Execution: Tungsten carbide tipped hole saw. Thin cutting width of only 2mm results in low cutting forces, therefore ideal for handheld (cordless) power tools, even up to diameter 150mm! Supplied with fixed arbor, exchangeable pilot drill bit (1 pc) and ejector spring (1 pc).

Application: Steels and stainless steels, max. 5 mm depth of cut. Non-ferrous materials like (fibre reinforced) plastics, aluminium, sandwich panels up to maximum depth of 11mm (remove ejector spring). If applied on thicker materials, remove chips every 2-3 mm depth of cut.

ød ₁ [mm]	T _{max} [mm]	ød ₂ [mm]
32,0	11	10
35,0	11	10
40,0	11	10
45,0	11	10
50,0	11	10
60,0	11	10

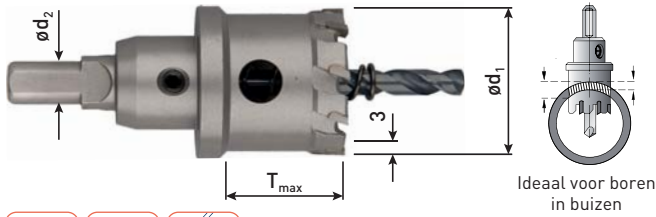
Pilot drill bits

Dimensions

ø6 x 48



TCT Hole saws 26mm



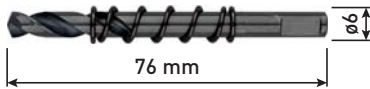
Execution: Tungsten carbide tipped hole saw with super heavy duty body and 3.0mm cutting width. For use in handheld power tools (up to $\varnothing 40$) and stationary machines (drill presses, magnetic core drills). Supplied with fixed arbor, exchangeable pilot drill bit (1 pc) and ejector spring (1 pc).

Application: Steels and stainless steels, max. 15 mm depth of cut. Non-ferrous materials like (fibre reinforced) plastics, aluminium, sandwich panels up to maximum depth of 26mm (remove ejector spring). If applied on thicker materials, remove chips whenever necessary. For flat materials, tubes and curved surfaces. Drilling with overlap is no problem.

$\varnothing d_1$ [mm]	T_{max} [mm]	$\varnothing d_2$ [mm]
16,0	26	10
17,0	26	10
18,0	26	10
19,0	26	10
20,0	26	10
21,0	26	10
22,0	26	10
23,0	26	10
24,0	26	10
25,0	26	10
26,0	26	10
27,0	26	10
28,0	26	10
29,0	26	10
30,0	26	10
31,0	26	10
32,0	26	10
33,0	26	10
34,0	26	10
35,0	26	10
36,0	26	10

$\varnothing d_1$ [mm]	T_{max} [mm]	$\varnothing d_2$ [mm]
37,0	26	10
38,0	26	10
39,0	26	10
40,0	26	10
41,0	26	10
42,0	26	10
43,0	26	10
44,0	26	10
45,0	26	10
50,0	26	10
55,0	26	10
60,0	26	10
65,0	26	10
70,0	26	10
75,0	26	10
80,0	26	13
85,0	26	13
90,0	26	13
95,0	26	13
100,0	26	13

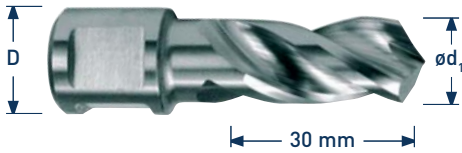
Pilot drill bits



Dimensions

$\varnothing 6 \times 76$

HSS twisted drill bits with weldon-shank



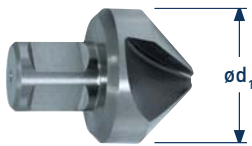
Diameter [mm]	Depth [mm]	Shank [mm]
10,0	30	Weldon 19
11,0	30	Weldon 19
12,0	30	Weldon 19

Execution: HSS-G solid drill bits, 3 fully CBN ground cutting edges and flutes for extremely stable drilling. Easy to regrind! With WELDON 19mm shank.

Application: For magnetic core drills or drill presses with either WELDON-type spindle mount or morse taper spindle mount in conjunction with an appropriate adaptor.
For drilling in most commonly used materials such as construction steels, mild steels and alloyed steels.

Diameter [mm]	Depth [mm]	Shank [mm]
13,0	30	Weldon 19
14,0	30	Weldon 19
15,0	30	Weldon 19

HSS-G COUNTERSINKS weldon shank



Execution: HSS-G countersinks, 90°, CBN ground cutting edges and flutes for extremely stable countersinking/chamfering applications. With WELDON 19mm shank.

Application: For magnetic core drills or drill presses with either WELDON-type spindle mount or morse taper spindle mount in conjunction with an appropriate adaptor.
For drilling in most commonly used materials such as construction steels, mild steels and alloyed steels.

Diameter [mm]	Length	Shank [mm]
25	43	Weldon 19
30	47	Weldon 19
40	52	Weldon 19
55	63	Weldon 19